



Making Net Zero a Reality

8th SUSTAINABLE INVESTOR SUMMIT

Speaker: Vanessa Müller
27th February 2025

ClimatePartner empowers companies to make net zero a reality. We support you throughout the entire journey with our solutions and expertise.

Experience

20 years in the market

Expertise

500 experts in climate action

Global

13 offices in 10 countries

Trusted

+6,000 clients

Our solutions

- Corporate Carbon Footprint
- Product Carbon Footprint
- Scope 3
- CSRD ESRS E1
- Net zero
- Science-based targets
- Carbon reductions
- Green energy
- Supply chains
- Climate projects
- Carbon credits
- Project development
- Reporting
- Communication

Our partners



SCIENCE
BASED
TARGETS
ENHANCING AMBITION AND IMPROVING CLIMATE ACTION



Gold Standard
Climate Action & Sustainable Development



VERRA



LEADERS
FOR
CLIMATE
ACTION



CLIMATE
PLEDGE
FRIENDLY



KPMG



TÜV
AUSTRIA



ICROA
International Carbon Reduction
& Other Alliance



CDP
WORLDWIDE LEADERSHIP ACTION



CFA
COOL FROM ALLIANCE

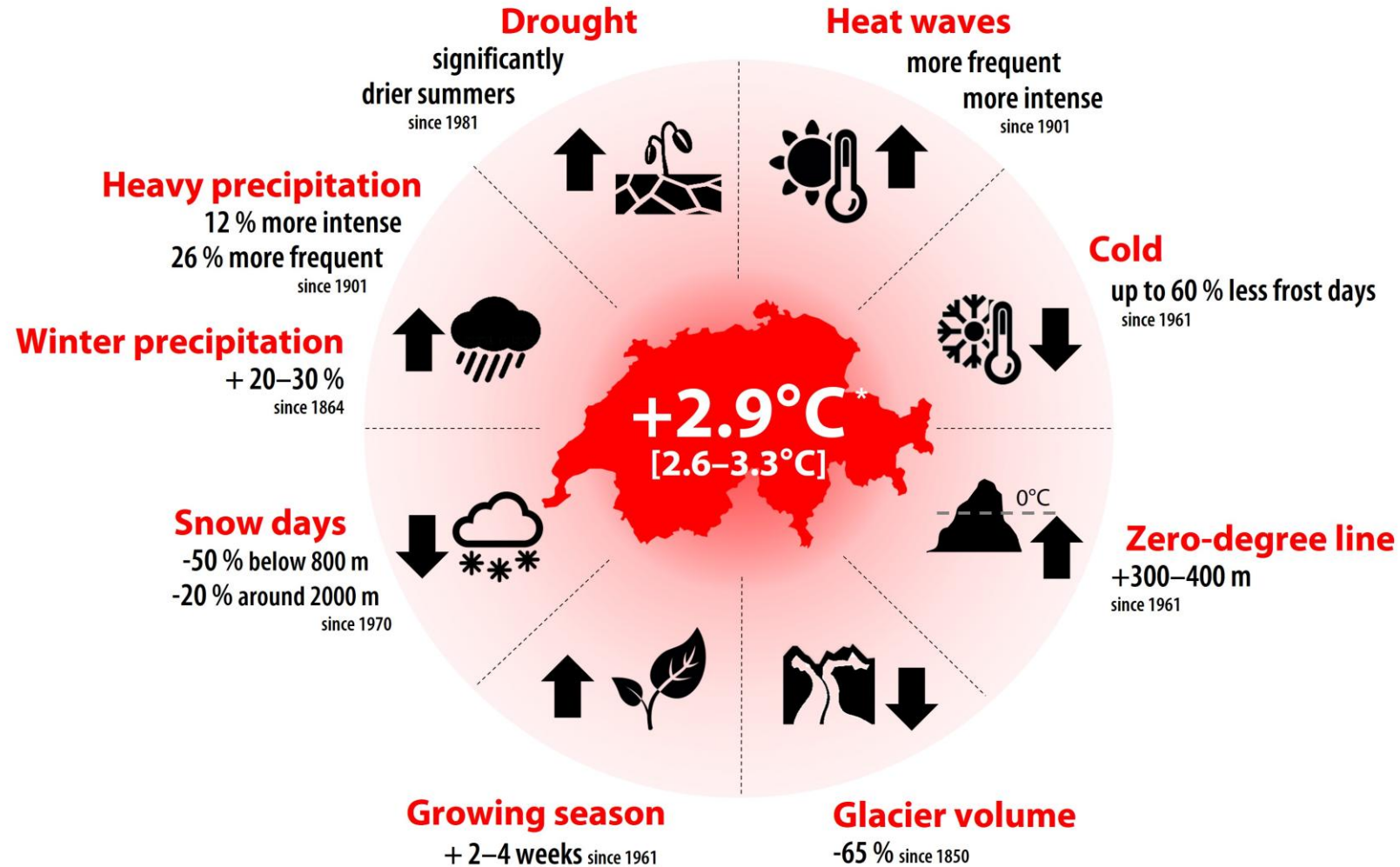


Allianz für
Entwicklung
und Klima



SUSTAINABILITY
REPORTING
PLATFORM

Observed climate change in Switzerland

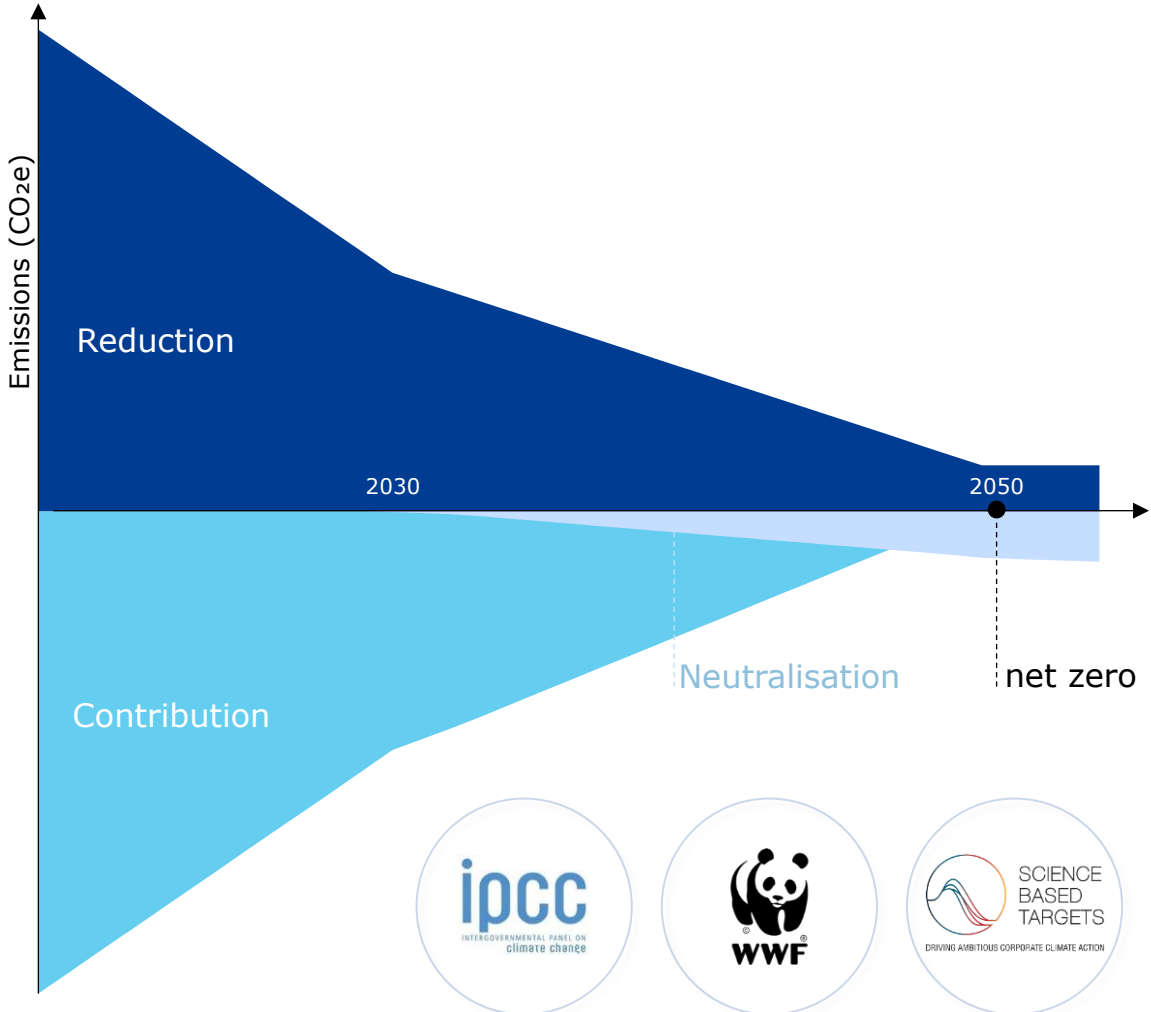


* current climate mean 2024 minus Ø 1871–1900



The SBTi has defined best practice on how to make net zero a reality

The SBTi released the Corporate Net-Zero Standard outlining the stringent requirements to be consistent with Paris Agreement goals. Organisations must take action today:



Reduction

From today: organisations should measure their carbon emissions, set targets, and reduce their emissions, often by more than 90%, before 2050.

Contribution

From today: while reducing emissions, organisations are also strongly encouraged* to finance projects beyond their value chain.

Neutralisation

When reduction targets have been achieved: residual emissions must be neutralised via removal credits.

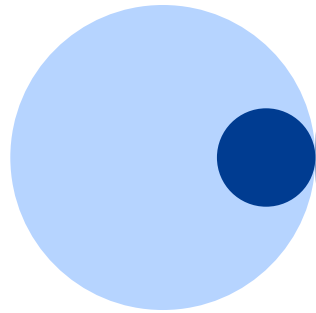
*outlined in the SBTi guidance on [beyond value chain mitigation \(BVCM\)](#).



A science-based reduction path is not enough

Following a science-based reduction path, you must **reduce your carbon footprint by 90%**

- Current carbon footprint
- Carbon footprint in a net zero state
- Your emissions until you reach net zero



It's time to get the other half of the job done, too

By the time you reach net zero, you will have emitted 15 times your current carbon footprint.

Addressing your impact on the climate crisis is **the other half of the job.**



ClimatePartner Switzerland AG
Technoparkstr. 1
8005 Zurich
Switzerland

www.climatepartner.com
switzerland@climatepartner.com

